

Worklight® 4.2.1

Development Environment Installation Guide

January 2012

Document Version 4



© 2006-2012 Proprietary and Confidential of WorkLight Inc.

The information contained herein is the propriety and confidential information of WorkLight Inc. and is not to be disclosed or used in any way except as expressly authorized by written contract with WorkLight.

Table of Contents

Document History	3
About This Document.....	4
Setting up the Environment	5
Supported Operating Systems.....	5
Supported SDKs	5
Installing a Database	5
Installing the Worklight Server.....	5
Installing the Worklight Studio.....	6
Installing Eclipse.....	6
Installing the Worklight Eclipse Plug-in	6
Installing Mobile SDKs.....	10
Installing Adobe AIR Tools	10
Starting and Stopping the Worklight Server	11
Starting and Stopping the Worklight Server on Windows.....	11
Starting and Stopping the Worklight Server on Mac.....	11
The Worklight Installation Folder	12
Configuring the Worklight Server	13
The Worklight Properties File.....	13

Document History

Version	Comment
2	Minor fixes
3	Instructions for installing tools for building and signing AIR apps
3	Minimum versions of mobile SDKs supported
4	Added links for installation instructions for MySQL on Windows and Mac

About This Document

This document is addressed for developers who want to set up the Worklight development environment. The document will guide you through the steps of installing software prerequisites, installing the Worklight server, and installing the Eclipse-based Worklight Studio.

Setting up the Environment

Supported Operating Systems

The Worklight development environment is supported on Windows 7, Vista, and XP, installed in 32 or 64 bit mode.

Worklight development environment is supported on Mac OS X 10.6 and above.

Supported SDKs

- For iOS, Worklight supports Xcode version 4 and above.
- For Android, Google recommends using the latest ADT.
- For Windows Phone, WorkLight supports Visual Studio 2010 for Windows Phone.
- For Adobe AIR, Worklight supports Adobe AIR SDK version 3 and above.

Installing a Database

The Worklight Application Platform uses a database to store metadata and run-time data. We recommend to developers to download and install MySQL and its official JDBC driver Connector/J. You can access <http://www.worklight.com/download/download-version-4.2.1> to get help on configuring the MySQL database.

Note that the Worklight Server installation requests access to the database and will automatically create a new MySQL database named “Worklight4”. The database will be populated by tables when the Worklight server is first run.

Refer to the following pages for detailed instructions for installing MySQL:

- On Windows: <http://www.worklight.com/download/mysql-windows>
- On Mac OS X: <http://www.worklight.com/download/mysql-mac>

Installing the Worklight Server

To install the Worklight Server, run the Worklight Installer, which will guide you through the installation process.

The installation process consists of the following steps:

1. Accepting the Worklight license agreement
2. Generating an evaluation license
3. Setting the installation folder

4. Providing connectivity details to the database, and downloading the Connector/J, MySQL's JDBC adapter.
5. Checking network connectivity: if the installer cannot automatically connect to the Internet, you will be able to define the network connectivity settings
6. Starting the Worklight Server.

Once the installation process is complete, you will find Start Menu shortcuts for starting and stopping the server, accessing the Worklight Console, opening the installation folder, and uninstalling the Worklight server.

If you have a special proxy or database configuration, please review the section “Configuring the Worklight server” below

Installing the Worklight Studio

Installing Eclipse

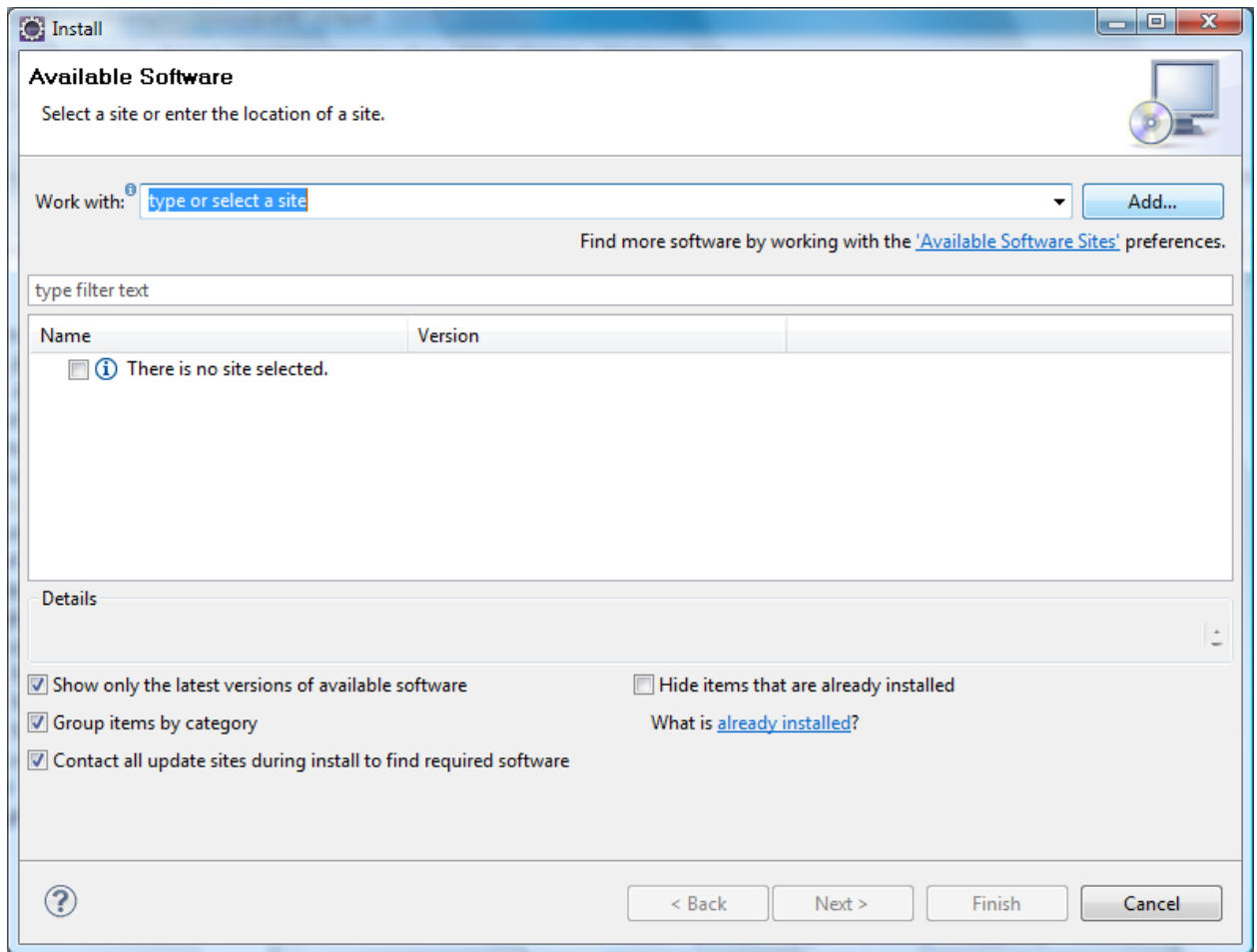
The Worklight Studio is an Eclipse-based IDE. To install it, download first the Eclipse IDE version Indigo SR1 or above for Java EE developers at <http://eclipse.org/downloads/>. After downloading the Eclipse zip file, unzip it to install the IDE.

Note: If you are using a pre-installed version of Eclipse, make sure that it uses Java 1.6. To do so, check that Eclipse's `eclipse.ini` file contains the line `-Dosgi.requiredJavaVersion=1.6`.

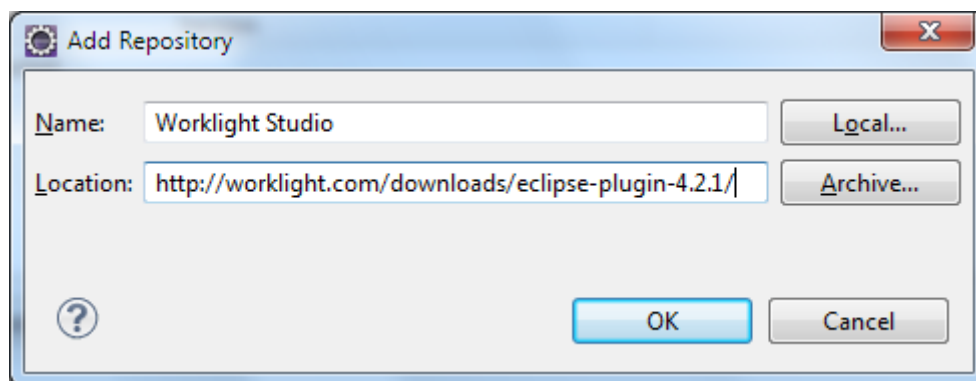
Installing the Worklight Eclipse Plug-in

In order to install the Worklight plug-in:

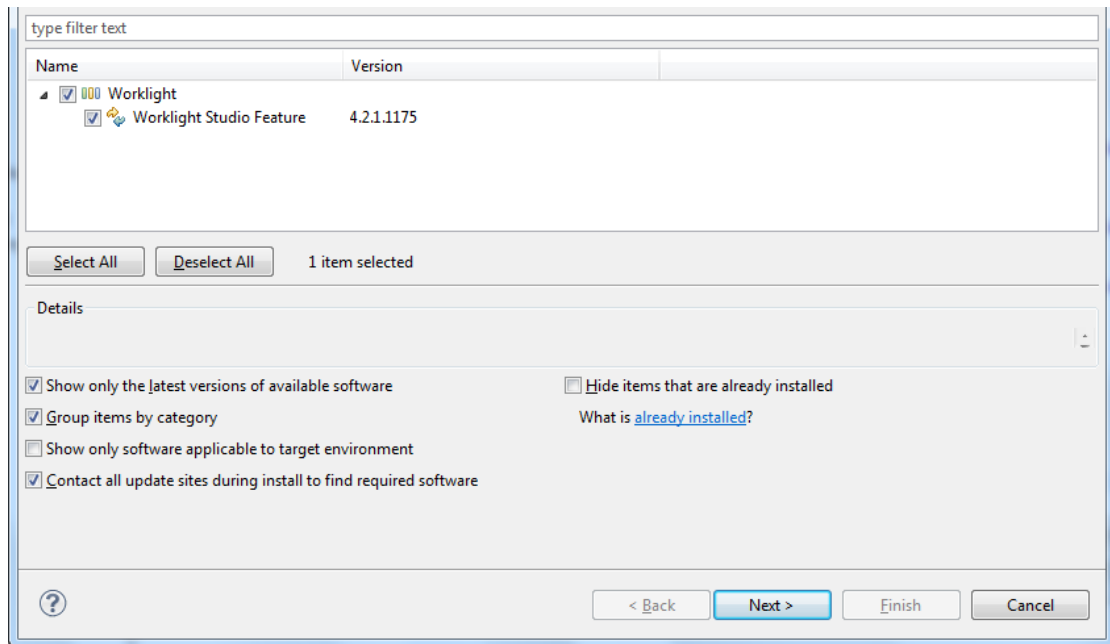
1. Start Eclipse.
2. Go to **Help > Install New Software...**
3. Click **Add...**



4. Type "Worklight Plug-in" in the name field and enter the following URL in the Location field of the Add Site dialog box: <http://worklight.com/downloads/eclipse-plugin-4.2.1/>.



5. Click OK.
6. Select Worklight Studio Feature from the list of available features.

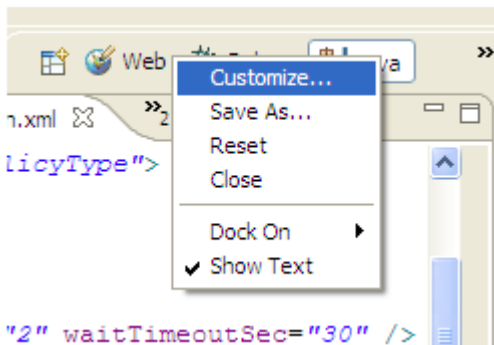


7. Click **Next**.
8. Review the installation details and click **Finish**. You will be prompted to restart Eclipse to apply changes.

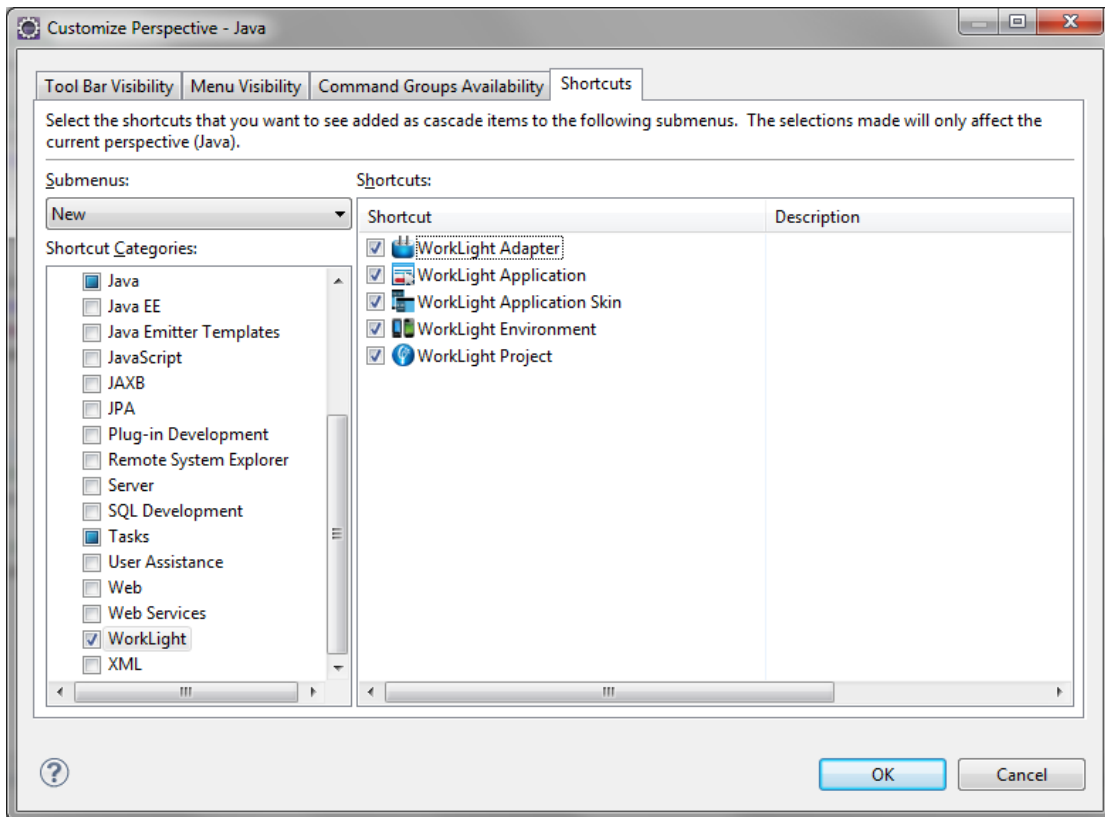
Adding Worklight shortcuts (optional)

In order to add Worklight shortcuts to the right-click menu of your perspective in Eclipse, perform the following steps:

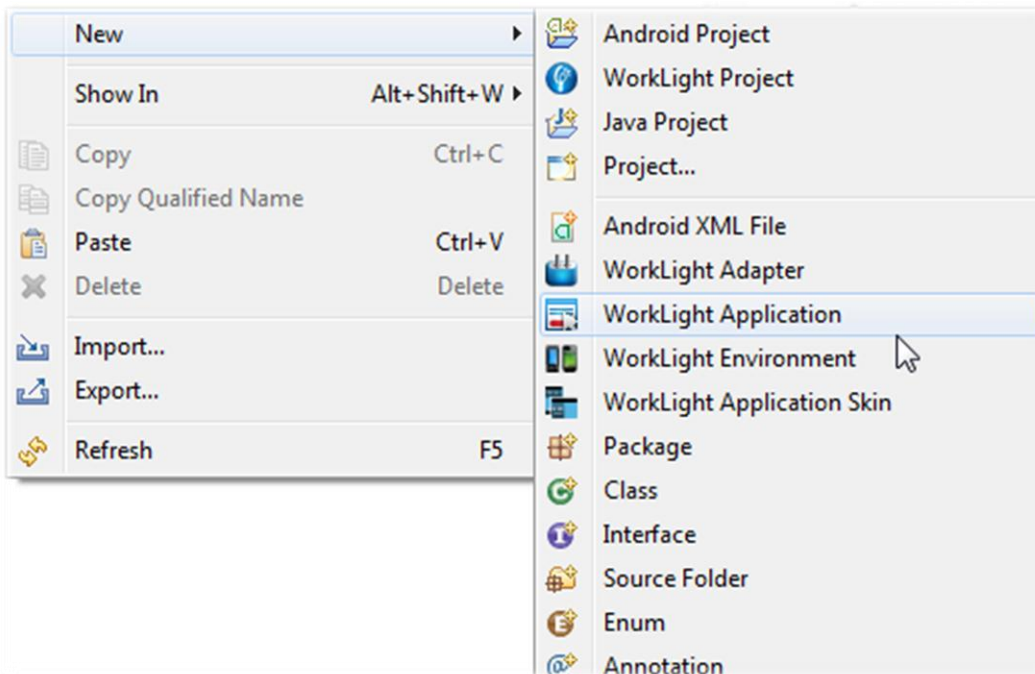
1. Right click on the Eclipse perspective and select “Customize...”



2. Select the Worklight shortcuts that you want to add.



Now the Worklight shortcuts will appear as right-click options, as show below.



Installing Mobile SDKs

When developing for iOS, Android, BlackBerry, and Windows Phone, you will need specialized SDKs from these vendors.

Please review the Worklight training material on <http://www.worklight.com/download/get-started/4.2.1/> for information on how to install these SDKs.

Installing Adobe AIR Tools

If you are planning to develop applications for Adobe AIR, you must install the Adobe AIR SDK so you can build your app and sign it.

1. Download the Adobe Air SDK from: <http://www.adobe.com/special/products/air/sdk/>
2. Unpack the archive into a folder of your choice
3. Set an environment variable (either locally or on central build server) named "AIR_HOME", pointing to the place where you opened the SDK. The Worklight Builder will use this environment variable to run the build and sign tool when building AIR apps.

Starting and Stopping the Worklight Server

Starting and Stopping the Worklight Server on Windows

To start the Worklight server:

- In the Windows Start Menu, click **Programs > Worklight > Start Server**

To stop the Worklight server:

- In the Windows Start Menu, click **Programs > Worklight > Stop Server**

Starting and Stopping the Worklight Server on Mac

The Worklight Server is installed in the Applications folder of the active user, for example: `/Users/JohnDoe/Applications/Worklight`.

To start the Worklight server:

- Navigate to the current user's Applications/Worklight folder, and click **Start Server.command**.

To stop the Worklight server:

- Navigate to the current user's Applications/Worklight folder, and click **Stop Server.command**.

Tip: Right-click the Start and/or Stop script files and choose "Make Alias"; you can then move the shortcut to the Desktop, the Dock, or to any other preferred location, to quickly start or stop the Worklight Server.

The Worklight Installation Folder

The Worklight installer creates the following directory structure for the Worklight Platform files:

`server`

`bin` – Worklight startup, shutdown and support scripts

`conf` – Worklight configuration files, including `worklight.properties` and `authenticationConfig.xml`

`authenticator` – Desktop authentication files

`certificates` – Certificates for desktop widget signing

`welcome` – Welcome screen template

`lib` – Worklight and external third-party jars

`content` – Default content, including adapter and application for adoption and usage reports

`doc` – Worklight documentation and licenses

`log` – Run-time and development log files

`tomcat` The Tomcat server configured for running Worklight

`jre` Worklight-required Java 6 JRE with the `tools.jar` file added

Configuring the Worklight Server

The Worklight Properties File

Configuration information is stored in the `worklight.properties` file, which is located in the `<Worklight Root Directory>/server/conf/` directory.

Typical installations of Worklight in a development environment require no manual setting. For a full list of settings please review Appendix B of the Worklight Administration Guide.